



National Taxpayers Association
pesa zetu, haki yetu

NYERI COUNTY

CITIZENS REPORT CARD

FINANCIAL YEAR 2014-15

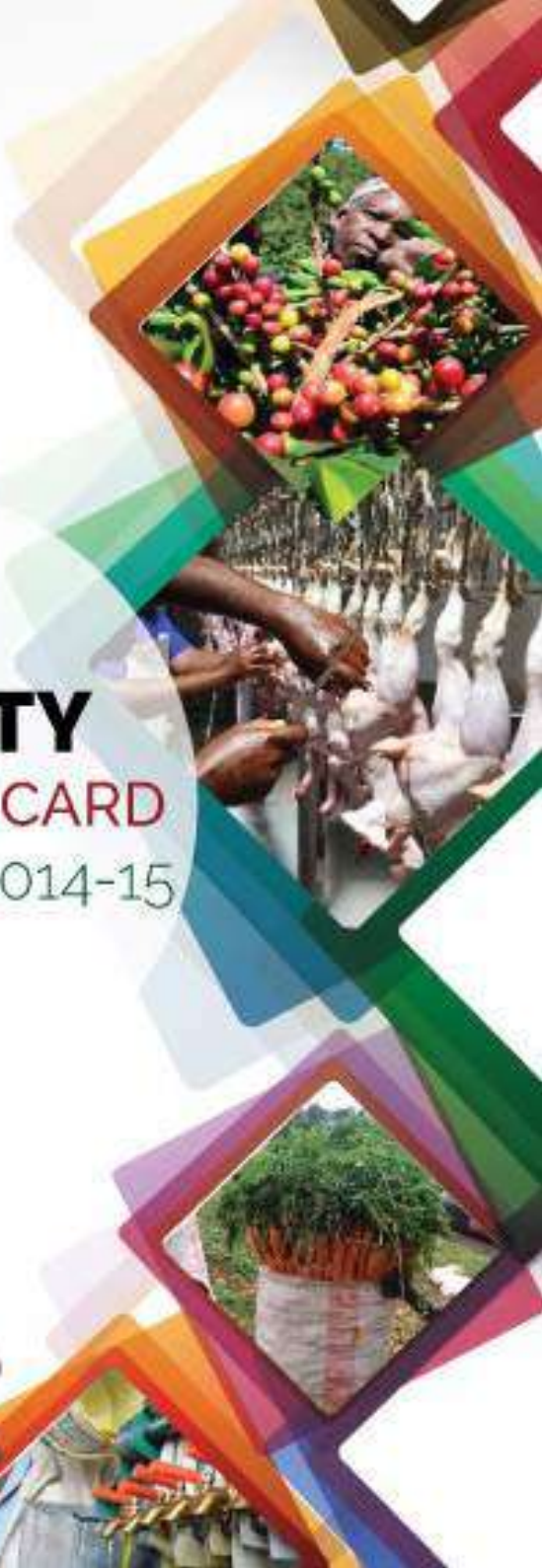


TABLE OF CONTENTS

2.0	Acknowledgement	I
1.0	Executive Summary	II
1.0	About NTA	v
2.0	About the Project	v
3.0	Research Methodology	vi
4.0	NTA Project categorization	vii
5.0	County summaries	ix
	County Profile	x
	Project profiles and digital pictures	1
	Challenges	53
	Recommendations	53
	Lessons Learnt	54
	Conclusion	54
	Annex	55



The findings expressed herein are those of the NTA and do not necessarily reflect the views of our partners.

© National Taxpayers Association
November, 2016

ACKNOWLEDGMENT

The National Taxpayers Association (NTA) wishes to acknowledge the contribution of various individuals who made this publication possible. This Pilot Follow Up County Citizen Report Card is a culmination of efforts from between Counties and the NTA for citizens to monitor revenue allocation and utilization to enhance transparency and accountability in the use of devolved public resources.

This citizen report card draws from the vast experience NTA has in carrying out social audits. We wish to acknowledge the following NTA Staff for their invaluable contribution; Michael Otieno, the Governance Advisor, Wolde Wesa, the National Coordinator, the Good Governance Project lead at NTA, Caroline Othim, with strategic and technical support from NTA regional coordinators namely Annah Katuki – Eastern, Deurence Onyango – Nyanza, Kennedy Elijah – Coast, Maryanne Mwangi – Central and Paul Odongo – Western who successfully piloted this project. Special thanks to the NTA ICT Officer, Thomas Mbuvi for his invaluable contribution to the compilation of the CRC.

Special thanks to the County Governments of Busia, Kisumu, Kitui, Kwale and Nyeri, the Office of the Auditor General, the Commission on Administration of Justice and Council of Governors for their support and collaborative efforts towards the development of the report.

Our sincere gratitude goes to GIZ and the Embassy of Finland for their generous financial support, which went a long way to make this publication a possibility.

EXECUTIVE SUMMARY

Corruption remains an inherent problem in utilization of revenue and public resources. This is in spite of official state led anti-corruption initiatives. Despite these reforms and efforts, corruption remains a fundamental problem. The public sector requires rethinking its approach to public finances oversight in the wake of questionable financial malpractices covering the entire spectrum in the public sector. If left alone the formal oversight institutions will not achieve much in the fight against corruption and wastage of taxpayers' money. There is therefore need for citizens to monitor resources allocated to projects at the sub national level.

The project sought to contribute to enhance social audit interventions through empowered citizens to fight corruption and abuse of power. The project particularly intended to ensure at the end of 2016, at least 40 percent of projects identified with issues through measures and action put in place by the county government to enhance prudent utilisation of the resources. The Social Audit process allows citizens to effectively engage government in monitoring and to demand accountability, review the performance of their service providers and devolved fund managers, agree on their collective demands, and articulate their priorities to the duty bearers. The citizens' report card serves three important and interrelated purposes, that is; a source of information for citizens, a tool for citizens to hold leaders accountable, and documenting development process at the local level.

NTA commissioned a pilot initial assessment of 199 county projects (F/Y 2014/15) in 2015, across five counties selected purposively. These counties are : Kisumu - 40, Busia - 49, Nyeri - 33, Kwale - 41 and Kitui - 36 to monitor the use and management of public resources using Citizens Report Cards (CRCs). A number of activities were carried out culminating in the development of the initial five County Citizen Report Cards (CRCs). These were well sequenced project components and activities that included; development of data collection tool, partnership building with respective counties, training of community based data collectors, field based project assessment, constructive engagement with county officials, dissemination of the report both at the county and national level,

The follow-up is informed by the constructive engagement exercise where NTA and the County Government jointly co-created an action plan to address the issues identified for improvement.

In this follow-up phase, NTA assessed 119 projects (Kisumu - 30, Busia - 34, Nyeri - 21, Kwale 16 and Kitui - 18.) Identified with issues for resolution from the initial assessment. These are projects which were either badly implemented, ongoing, abandoned, delayed or ghost projects. The average fixed rate calculated for this follow-up phase is 55%.

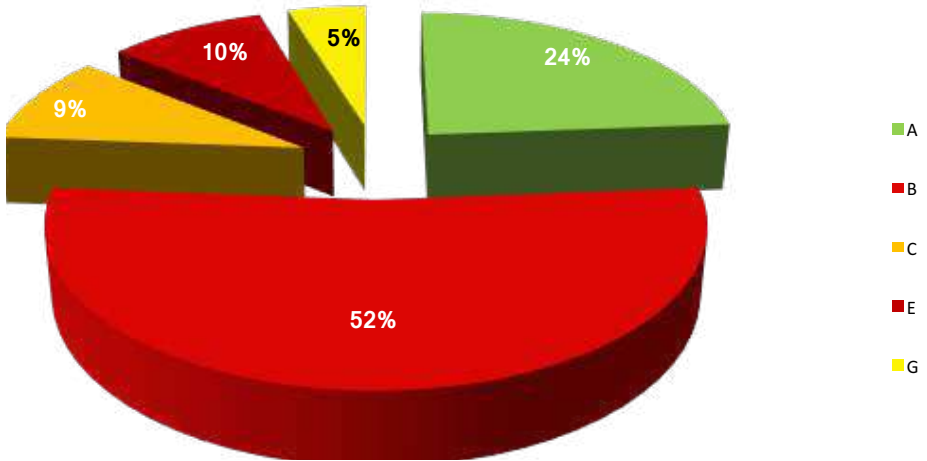
$$\text{Fix Rate} = \frac{\text{Number of resolved problematic projects}}{\text{Number of problematic projects in the initial assessment}} \times 100$$

This report therefore highlights the progress achieved so far by counties in implementing the action plan commitments agreed upon during the initial phase constructive engagements, the lessons learnt thereof and suggestion on a number of general and counties specific recommendation with a view of continuously improving county level implementation and enhancing service delivery.

FIX RATE MATRIX

CATEGORIES	PROJECTS	PERCENTAGE
A	5	24%
B	11	52%
C	2	9%
E	2	10%
G	1	5%
TOTAL	21	100%





	PROJECTS	PERCENTAGE
Total Projects in the initial phase	30	100%
Total well implemented projects in initial phase	9	30%
Total Projects with listed issues in initial phase	21	70%
Fix rate expected	21	100%
Fix rate realised	7	33%
Fix rate not realised	14	67%

1.0 About NTA

NTA is a national, independent, non-partisan organization focused on promoting good governance in Kenya Since 2006,

NTA has been implementing programmes focused on citizen demand for accountability through monitoring of the quality of public service delivery and the management of devolved funds.

It has achieved this through partnership building, citizen empowerment and development of social accountability tools (e.g. Citizen Report Cards and Community Scorecards).

NTA is fully independent of government; however, it is committed to working with the government to improve the quality of public service delivery and the management of devolved funds.

Vision: An accountable, citizen-responsive government delivering quality services to all.

Mission: To promote accountable, effective and efficient collection and utilization of public resources through citizen empowerment, enhancing public service delivery and partnership building.

2.0 About the Project

NTA with the support of GIZ and the Ministry of Foreign Affairs of Finland is implementing a project aimed at promoting good governance, transparency and accountability at the sub-national level through effective citizen participation, oversight in monitoring the management of devolved funds and problem solving.

The project location is Busia, Kisumu, Kitui, Nyeri, and Kwale counties. The project is aimed at achieving the following specific objectives; -

1. To establish partnerships with institutions at national and sub national for information sharing and redress mechanisms.
2. To enhance the capacity of citizens to effectively monitor the management of public funds.
3. To monitor implementation of public projects through development, production and dissemination of citizen report cards.



3.0 Methodology

1. Citizen empowerment (NTA staff and community monitors)
2. Communication to County Governments (Busia, Kisumu, Kitui, Nyeri, and Kwale counties) and oversight institutions e.g. the EACC, Office of the Auditor General and Commission on Administrative Justice (Ombudsman)
3. Follow up site visit to selected projects (problematic and category C projects) funded in FY 2014/15 across sectors e.g. health, education, water and sanitation etc.
4. Interview users (using Development-check app and beneficiary questionnaires)
5. Take digital photos.
6. Technical assessment and classification of the projects by an independent Engineer/Quantity Surveyor
7. Constructive engagement meetings with County Governments for comments on draft CRC reports and commitments to address recommendations.
8. Revisiting of contentious projects.
9. Development of final CRCs
10. Dissemination of CRC reports

4.0 NTA project categorization

<p>Category A Projects Well implemented, completed projects</p>	<p>This category is for projects that scored above 50% by the engineer during the technical assessment and were found to be well built; with good value for money (i.e. The budget spent is commensurate to the project delivered).</p>
<p>Category B Projects Badly implemented, complete and incomplete projects</p>	<p>This category is for projects, which had scored less than 50% on the Technical Assessment Form, and were poorly constructed with no commensurate value for money, and/or with budgets much larger than what is actually delivered.</p>
<p>Category C Projects Well-implemented, incomplete projects</p>	<p>This category is for projects, which had scored above 50% on the Technical Assessment Form, and the projects were well implemented but on-going, i.e. Money had been used to build a structure of good quality, but the construction is incomplete.</p>
<p>Category D Projects Abandoned Projects</p>	<p>This category is for incomplete projects and which have not consistently been receiving financial allocation for the continuation of project implementation.</p>



<p>Category E Projects Ghost projects</p>	<p>This category is for projects, which had been officially, allocated funds but the project did not physically exist at the time of study and money was proven spent i.e. It is a ghost project.</p>
<p>Category F Projects Reallocated Funds</p>	<p>This category is for projects that were not implemented for the reason that the funds were reallocated to other projects.</p>
<p>Category G Projects Delayed implementation</p>	<p>The project is officially allocated funds but the implementation has not started and funds are in still in the Account.</p>

5.0 Follow Up Summary findings from the Audit of the County projects

Project Assessment Classification	No. Of Projects	Budget Allocated [KSHS]	Budget Spent [KSHS]	Outstanding Balance [KSHS]	Unaccounted [KSHS]
Well Implemented Projects	14	119,863,824.00	119,863,824.00	00	00
Badly Implemented Projects	11	144,671,383.00	148,768,268.00	-4,096,885.00	00
Ongoing Projects	2	26,735,204.00	13,700,000.00	13,035,204	00
Delayed projects	1	2,481,807.00	1,983,820.00	497,987.00	00
Does not exist	2	1,621,250.00	00	1,621,250.00	1,621,250.00
Total	30	265,373,468.00	283,315,912.00	11,057,556.00	1,621,250.00

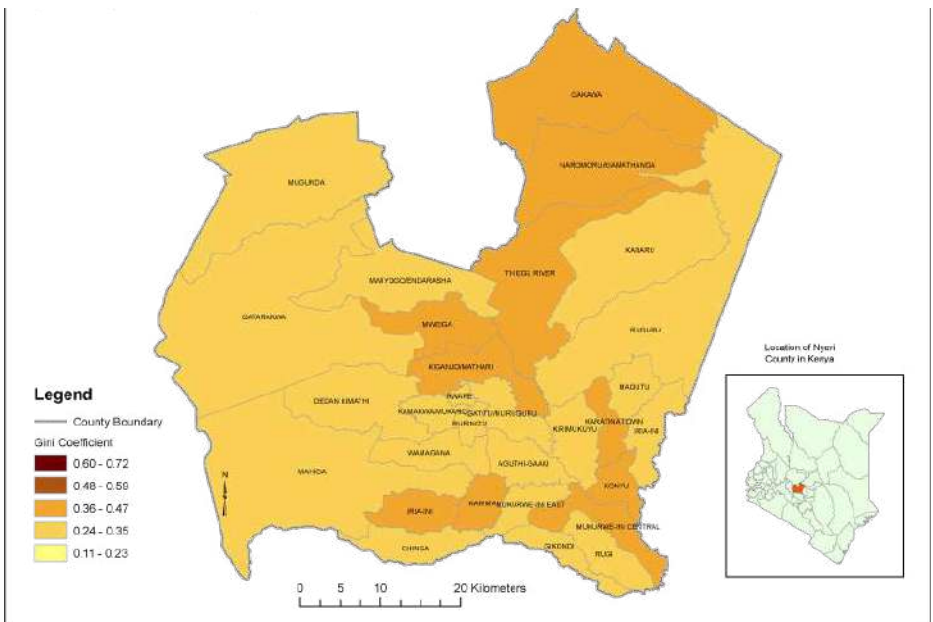
PROFILE OF NYERI COUNTY

Nyeri County is located in the central region of Kenya. It has a population of 661,156 and an area of 3,356 km². The county borders Laikipia, Murangá, Kirinyaga and Embu counties. There are 8 sub-counties in the county namely: Kieni East, Kieni West, Mathira East, Mathira West, Nyeri Central, Mukurweini, Tetu and Othaya.

Agriculture, tourism, service industry and light industries are the main economic mainstays in Nyeri County. A major industry is farming and the main cash crops are coffee and tea while the main food crops are maize, legumes (especially beans and peas), tubers (mainly potatoes), and vegetables (especially tomatoes, cabbage, spinach and kale).

Livestock farming, mainly dairy cattle, goats, sheep, and chicken are also widely kept.

Tourism is also significant, as there are many tourist destinations including the Aberdare and Mount Kenya National Parks, private ranches among others.



Project Name: Gichecheni-Gatunduini-Thunguri Road

Sub County: Mukurwe-ini

Ward: Mukurwe-ini west

Project Activity: Grading and graveling of road

INITIAL ASSESSMENT



Assessment date
17th September 2015

Total funds awarded
7,806,568.00

Total funds spent
7,025,911.20

Outstanding Balance
780,656.80

Project Classification
Category B

Project Status
Complete and in use

Comments

The project goal was to enhance

access of the area served by the loop through creation of an all weather road for improved socio-economic benefit.

The project was well implemented, it covers a total distance of 3.2 km. Its estimated cost would be in the range of kshs.1.3m - 1.5m meaning that the same even using the high end of estimates, is over priced, but the murrum quality is good.

The project budget is too high and should be in the range of 4.2m - 4.75m.

Project Name: Gichecheni-Gatunduini-Thunguri Road

Sub County: Mukurwe-ini

Ward: Mukurwe-ini west

Project Activity: Grading and graveling of road

FOLLOW UP ASSESSMENT



Assessment date
8th November 2016

Total funds awarded
7,806,568.00

Total funds spent
7,806,568.00

Outstanding Balance
Nil

Project Classification
Category A

Project Status
Complete and in use

Comments

The project objective was to enhance access of the area served by the loop through creation of an all weather road for improved social-economic benefit.

The gravelling was well implemented. The beneficiaries would have been advised on limitation to their land boundaries to allow drainage works.

Project Name: Muthangira Dispensary

Sub County: Kieni West

Ward: Mugunda

Project Activity: Construction of foundations, super structure and roofing works only (phase 1)

INITIAL ASSESSMENT



Assessment date

15th September 2015

Total funds awarded

4,988,371.00

Total funds spent

4,988,371.00

Outstanding Balance

Nil

Project Classification

Category G

Project Status

Incomplete and not in use

Comments

The building is complete to ring beam level only and the project has delayed.

However, the amount spent so far is commensurate to the work done..



Project Name: Muthangira Dispensary

Sub County: Kieni west

Ward: Mugunda

Project Activity: Construction of foundations, super structure and roofing works only (phase 1)

FOLLOW UP ASSESSMENT



Assessment date

10th November 2016

Total funds awarded

4,988,371.00

Total funds spent

4,988,371.00

Outstanding Balance

Nil

Project Classification

Category A

Project Status

Complete and not in use

Comments

The objective of the project was

to give the residents access to health care.

Phase 1 of the project is complete. At time of reassessment phase 2 was found to be substantially complete and any further/additional construction to be determined by the user.(Department of Health)



Project Name: Githagara-Karigono Water Pipeline

Sub County: Mukurwe-ini

Ward: Gikondi

Project Activity: Supply of pipes and fittings.

INITIAL ASSESSMENT



Assessment date

15th October 2015

Total funds awarded

6,000,000.00

Total funds spent

No information

Outstanding Balance

Project Classification

Category G

Project Status

Does not exist.

Comments

The project was meant to provide a line dedicated to the Karigono area in order to ease water shortages. The county government was supposed to provide the pipes and fittings while the beneficiary community were to do the laying of the pipes.

However, no pipes and fittings were supplied during the last financial year and no payments were done therefore the projects had not taken off.

Project Name: Githagara-Karigono Water Pipeline

Sub County: Mukurwe-ini

Ward: Gikondi

Project Activity: Supply of pipes and fittings.

FOLLOW UP ASSESSMENT



Assessment date

8th November 2016

Total funds awarded

6,000,000.00

Total funds spent

6,000,000.00

Outstanding Balance

Nil

Project Classification

Category A

Project Status

Complete and in use

Comments

The project was meant to providing water to Gikondi pipeline and the older Mukurwe-ini line so that Karigono area would be eased by water shortages.

The pipes and fittings were supplied and the pipeline constructed. Thus, the project is completed and is serving the beneficiaries well with adequate water flow.



Project Name: Kiagengi ECDE

Sub County: Mathira

Ward:Magutu

Project Activity: Finishing works on ECDE structure previously funded by CDF.

INITIAL ASSESSMENT



Assessment date
16th September 2015

Total funds awarded
269,935.00

Total funds spent
269,935.00

Outstanding Balance
Nil

Project Classification
Category C

Project Status
Ongoing and not in use

Comments

Final touches are being carried on. The project was previously funded by Mathira Constituency development Fund. It consists of a classroom with two units. Works in this contract involved casting of the floor slab, construction of access ramp, plastering (outside walls) and joint pointing, glazing and painting.

The project was aimed at creating a conducive learning environment for the beneficiaries who are the young children. The facility is almost complete and will be ready for occupation

Project Name: Kiagengi ECDE

Sub County: Mathira

Ward: Magutu

Project Activity: Finishing works on ECDE structure previously funded by CDF.

FOLLOW UP ASSESSMENT



Assessment date
8th November 2016

Project Classification
Category A

Total funds awarded
269,935.00

Project Status
Complete and in use

Total funds spent
269,935.00

Outstanding Balance
Nil

Comments

The materials used were of good quality standards and good workmanship is observed. The project is well implemented and the value of the money used is also observed.



Project Name: Thage-ini Dispensary

Sub County: Tetu

Ward: Aguthi

Project Activity: Equipping and operationalization of the facility

INITIAL ASSESSMENT



Assessment date

11th September 2015

Total funds awarded

4,800,000.00

Total funds spent

No information

Outstanding Balance

Project Classification

Category B

Project Status

Complete and in use

Comments

The project was meant to extend health service coverage to the rural areas. Most of the items supplied (especially equipment) has not been put to use and are still in their parking boxes fridge for storing immunisations not yet powered.

Most of the equipment has not been put to use implying that there might not have been an overriding need for their purchase or there are no adequate staff to utilise them at the dispensary.

Project Name: Thage-ini Dispensary

Sub County: Tetu

Ward: Aguthi

Project Activity: Equipping and operationalization of the facility

FOLLOW UP ASSESSMENT



Assessment date

9th November 2016

Total funds awarded

954,500.00

Total funds spent

954,500.00

Outstanding Balance

Nil

Project Classification

Category A

Project Status

Complete and in use

Comments

The quality of equipments supplied is good and the cupboards constructed are in order. However, there are under utilization of the facility due to under-staffing.

The facility should be well staffed so that the community can utilize the equipments hence observing the value for money on the equipments.

The County affirmed that it is in the process of recruiting more staff



Project Name: Karatina Urban Primary School

Sub County: Karatina

Ward: Mathira

Project Activity: Completion of ablution block..

INITIAL ASSESSMENT



Assessment date
17th September 2015

Total funds awarded
165,000.00

Total funds spent
165,000.00

Outstanding Balance
Nil

Project Classification
Category A

Project Status
Complete and in use

Comments

The main objective of the project was to improve sanitary and hygiene standards in the school by construction of a water borne sanitation facility emptying into municipal sewers.

The project is well implemented and the finishes are good and in use. It has enhanced sanitation standards in the school.

Project Name: Karatina Urban Primary School

Sub County: Karatina

Ward: Mathira

Project Activity: Completion of ablution block..

FOLLOW UP ASSESSMENT



Assessment date
8th November 2016

Total funds awarded
165,000.00

Total funds spent
165,000.00

Outstanding Balance
Nil

Project Classification
Category A

Project Status
Complete and in use

Comments

The objective of the project was to improve the sanitary and hygiene standards in the school by construction of a water borne sanitation facility emptying into the municipal sewer system.

The project is in use and in good working condition. However, at the time of re-assessing, we found that a new toilet facility (presumed for staff) had been constructed by the Nyeri County Government.

Project Name: High Mast Flood Lights

Sub County: Othaya

Ward: Iria-ini

Project Activity: Installation of 24 NO. 30m high flood masts (Othaya-Gatuyaini market).

INITIAL ASSESSMENT and FOLLOW UP ASSESSMENT



Assessment date
9th September 2015

Total funds awarded
73,000,000.00

Total funds spent
165,000.00

Outstanding Balance
Nil

Project Classification
Category A

Project Status
Complete and in use

Comments

The facility was commissioned and is in good use, it was meant to improve on the security in the market and extend the working hours which has greatly impacted the shopping centre and its environ. The average monthly bill is Kshs 5,000. The work was done within the estimated cost.

Project Name: Nyeri County Referral Hospital

Sub County: Nyeri Central

Ward: Majengo

Project Activity: Renovation of main workshop, store, tailoring room and maternity.

INITIAL ASSESSMENT and FOLLOW UP ASSESSMENT



Assessment date
15th September 2015

Total funds awarded
4,441,100.00

Total funds spent
4,441,100.00

Outstanding Balance
Nil

Project Classification
Category A

Project Status
Complete and in use

Comments

The renovation work entailed; Conversion of a nursery building into a maternity, theatre changing room for the officer in charge of maternity. Relocation of the carpentry work shed from the medical training school to the Level 5 (to former stores), relocation of stores to a renovated building which previously housed the tailoring room, relocation of tailoring room to a portioned area within the dhobi building, fitting of new access to other paediatric workshop and renovation of medical workshop to include dwarf walls and ceiling boards replacement. The work was well done and its complete.

Project Name: Whispers Public Park

Sub County: Nyeri Central

Ward: Nyeri Town

Project Activity: Provision of public Internet

INITIAL ASSESSMENT and FOLLOW UP ASSESSMENT



Assessment date
1st October 2015

Total funds awarded
990,000.00

Total funds spent
990,000.00

Outstanding Balance
Nil

Project Classification
Category A

Project Status
Complete and in use

Comments

The project entailed the provision of public internet at 493,000 and library internet at whispers park at 497,000. The project was implemented though often times the quality of the signal is not good.

The monthly payments for the same are done by the ICT department to the service providers at the rate of kshs. 23,200 per month.

Currently, only the library internet is operational as whispers park is being used as a temporary market place.

Project Name: Ruringu Stadium

Sub County: Nyeri Central

Ward: Ruringu

Project Activity: Minor renovations of tracks, dais, water reticulation, toilets and fencing.

INITIAL ASSESSMENT and FOLLOW UP ASSESSMENT



Assessment date

16th September 2015

Total funds awarded

458,880.00

Total funds spent

458,880.00

Outstanding Balance

Nil

Project Classification

Category A

Project Status

Complete and in use

Comments

The stadium was refurbished in readiness for the school games and it was completed as scheduled. The games were held and the stadium continues being regularly used.

The project was well implemented and within the allocated time indicating value of money.

The public and especially the youth are encouraged to fully use this facility



Project Name: Warazo Health Centre

Sub County: Kieni East

Ward: Kabaru

Project Activity: Conversion of existing building into an X-ray facility

INITIAL ASSESSMENT and FOLLOW UP ASSESSMENT



Assessment date
22st September 2015

Total funds awarded
198,920.00

Total funds spent
198,920.00

Outstanding Balance
Nil

Project Classification
Category A

Project Status
Complete and in use

Comments

The facility is in use. It involved refurbishment and conversion of an existing building into an X-RAY room by creating a dark-room, store, tiling and installation of lead glass, installation of elevated plastic water tank for storage plus associated plumbing and drainage works.

All planned refurbishment was done and the X-ray facility put to use, hence there was value for taxpayers' money.

Project Name: Narumoru Health Centre

Sub County: Kieni East

Ward: Kiamathaga

Project Activity: Refurbishment work to X-ray building (Existing)

INITIAL ASSESSMENT and FOLLOW UP ASSESSMENT



Assessment date
22st September 2015

Total funds awarded
1,809,805.00

Total funds spent
1,809,805.00

Outstanding Balance
Nil

Project Classification
Category A

Project Status
Complete and in use

Comments

The project involved roofing (Replacement of timber), Tiling, painting, plumbing including installation of sink/ drains and fabrication of shelves in the general office to operationalize an already installed X-ray machine.

The facility operates on Monday, Wednesday and on Friday due to lack of adequate staff. The county stated there is a technician on call and they are in the process of recruiting more staff

However the facility is well utilized hence there is value for Taxpayers' money.

Project Name: Flood Light Mast

Sub County: Kieni East

Ward: Endarasha-Mwiyogo

Project Activity: Installation of 6 floodlight mast in various towns.

INITIAL ASSESSMENT and FOLLOW UP ASSESSMENT



Assessment date
9st October 2015

Total funds awarded
18,200,000.00

Total funds spent
12,000,000.00

Outstanding Balance
6,200,000

Project Classification
Category A

Project Status
Complete and in use

Comments

The facility is commissioned and in use. The project was intended to enhance security and extend working hours of the beneficiary community.

The project site is densely populated and especially in the main market of the town.

The project is in use and serving the intended purpose of lighting up the entire market and its environs. The monthly bill is approximately Kshs. 5,000. The work was well done.

Project Name: Chaka Primary School

Sub County: Kieni East

Ward: Thegu River Ward

Project Activity: Refurbishment of ECDE block.

INITIAL ASSESSMENT and FOLLOW UP ASSESSMENT



Assessment date

1st October 2015

Total funds awarded

607,695.00

Total funds spent

607,695.00

Outstanding Balance

Nil

Project Classification

Category A

Project Status

Complete and in use

Comments

The toilet block is complete and in use.

Work well done and good use of money

Project Name: Nyeri Town CBD Street Parking

Sub County: Nyeri Central

Ward: Rware

Project Activity: Demarcation of street parking in the CBD using kerb stones and thermal paint.

INITIAL ASSESSMENT



Assessment date

7th September 2015

Total funds awarded

13,557,061.00

Total funds spent

13,557,061.00

Outstanding Balance

Nil

Project Classification

Category B

Project Status

Complete and in use

Comments

345 parking bays were created at a per capital cost of approximately Kshs 39,295.

The amount is way above what would be expected of this kind of work and therefore there is no commensurate value for taxpayers' money.

The county government clarified that the parking lot were also supposed to add the aesthetic of town as well as improve the cleanliness of the Nyeri town CBD



Project Name: Nyeri Town CBD Street Parking

Sub County: Nyeri Central

Ward: Rware

Project Activity: Demarcation of street parking in the CBD using kerb stones and thermal paint.

FOLLOW UP ASSESSMENT



Assessment date
9th November 2016
Total funds awarded
13,557,061.00
Total funds spent
13,557,061.00
Outstanding Balance
Nil

Project Classification
Category B
Project Status
Complete and in use
Comments

The project had been allo-



cated more funds than what would be expected of this kind of work. The bays along central hotel-IBIS hotel have seriously deteriorated.

The CBD management should note that 14 NO. Parking bay between Kungu Maitu hotel to Majengo road (Opposite Kobil Petrol Station) are being used as motor vehicle garage thus rendering no value for money, even for the shop owners along the area and the county government is strongly urged to look into these, and promptly rectify.



Project Name: Nyaribo Primary School

Sub County: Nyeri central

Ward: Kiganjo-Mathari

Project Activity: Excavation for the pit latrine, substructures and super-structures for 3 toilet blocks.

INITIAL ASSESSMENT



Assessment date
25th September 2015

Total funds awarded
2,481,903.00

Total funds spent
2,481,903.00

Outstanding Balance
Nil

Project Classification
Category B

Project Status
Complete and in use

Comments

The project consists of One block for the boys, one for the girls and another for the staff

members. However, the durability of the doors and painting was not done to the required standard, also, there was poor quality materials and poor workmanship.

The project de-congested the available sanitary facility as previously there was only one block of no. 6 cubicles on either side for use by the whole school population.

Each of the three units comprises of no. 2 cubicles and a urinal for both the boys and staff blocks. The depth of the pits are approximately 3.0 m and they are all lined with stone.

Project Name: Nyaribo Primary School

Sub County: Nyeri central

Ward: Kiganjo-Mathari

Project Activity: excavation for the pit latrine, substructures and super-structures for 3 toilet blocks.

FOLLOW UP ASSESSMENT



Assessment date
4th November 2016

Total funds awarded
2,481,903.00

Total funds spent
2,481,903.00

Outstanding Balance
Nil

Project Classification
Category B

Project Status

Complete and in use

Comments

The project was aimed at providing a conducive learning and working environment for students and staff through provision of VIP latrines.(1 block for boys, 1 block for girls and 1 block for staff)

Although the project de-congested the sanitation as the population of the students in the school is rising, the durability of paint work and doors is doubtful because of poor quality materials and workmanship.

The depth of the pits were approved to be 3.0m and they were well aligned with stones. At the time of reassessment, the pit latrines were almost full, that is, only 0.5m to be full, therefore need to exhaust.

The implementer should have catered for the equal volume as per the design.

The principal also noted that the boys and girls latrines were constructed closely.

Project Name: Nyeri County Referral Hospital

Sub County: Nyeri central

Ward: Majengo

Project Activity: renovation of building, construction of filter plant building , installation f filter (water) supply and installation of 10 NO. Renal dialysis machines and their consumables.

INITIAL ASSESSMENT



Assessment date
10th September 2015
Total funds awarded
27,000,000.00

Total funds spent
00
Outstanding Balance
00

Project Classification
Category B
Project Status
Complete and in use

Comments

There are 6 out of the 10 machines Procured installed in the general ward with one other machine being on emergency standby, while one machine backed by one standby would be installed

for hepatitis patients and Aids patients respectively in an isolation ward.

To date, the isolating ward has not been operationalized and only 6 machines are in use. Its worth noting that out of the 10 machines supplied, 4 did not work. 1000 consumable kits supplied with the machines were incompatible and are being exchanged by the supplier piece meal. Also there are no enough adequately trained personnel to handle the machines to be utilized at full capacity. Therefore the project though well meaning and definitely needed does not represent commensurate value for taxpayers' money.

Project Name: Nyeri County Referral Hospital

Sub County: Nyeri central

Ward: Majengo

Project Activity: Renovation of building, construction of filter plant building, installation of filter (water) supply and installation of 10 NO. Renal dialysis machines and their consumables.

FOLLOW UP ASSESSMENT



Assessment date

7th November 2016

Total funds awarded

27,493,860.00

Total funds spent

27,493,860.00

Outstanding Balance

Nil

Project Classification

Category B

Project Status

Complete and in use

Comments

There are still 6 machines installed in the general ward with 1 machine on emergency standby, while 1 other backed by 1 standby installed for hepatitis patients and AIDs patients respectively in an isolation ward.

The information from the med-

ical staff indicated that out of the 10 procured machines, they are only able to operate 6 at any given time. To run the 10 dialysis machines they require additional staff. The value for money is not well observed.

Furthermore, the county received an additional 5 dialysis machines from the National Government which have condition to run at least 90% in giving out services. Therefore, it was noted that most of the county procured machines may be lying idle since the hospital cannot run all the 15 machines without additional staff and a building facility to install the 5 machines added. It was noted that the dialysis machines from the National Government were more reliable.

Project Name: NMT facility (Kamakwa-Nyeri)

Sub County: Nyeri Central

Ward: Kamakwa/Mukaro/Rware

Project Activity: Construction of NMT facility to a bitumen standards

INITIAL ASSESSMENT



Assessment date

10th September 2015

Total funds awarded

37,850,912.00

Total funds spent

41,947,797.00

Overpayment

4,096,885.00

Project Classification

Category B

Project Status

Complete and in use

Comments

The project intentions were noble but some omissions have rendered its use a bit unfriendly. The omissions in the project include:- the slabs over the gully/drain crossings zebra crossing at Temple road where the footpath crosses the main road, there is a missing section near the PC's office entrance (Approx. 15 M) and a missing section near Kamakwa

(Approx.100M). The missing sections mean pedestrians have to get back to the main road / cross the road therefore defeating the purpose that was planned for.

The missing slabs on the drain crossings make the facility unfriendly to the disabled and the old whenever one wants to cross over as it will necessitate being carried.

Additionally the cost of the project on the face of it is too high, the NMT length is 3.5

KM and approximately 0.9 M width, implying a unit cost of 10.8 M per KM which is highly exaggerated, also appears to be an overpayment of 4,096,885 which requires exhaustive explanation to the public

Project Name: NMT facility (Kamakwa-Nyeri town)

Sub County: Nyeri central

Ward: Kamakwa/Mukaro/Rware

Project Activity: construction of NMT facility to a bitumen standards.

FOLLOW UP ASSESSMENT



Assessment date

7th November 2016

Total funds awarded

37,850,912.00

Total funds spent

41,947,797.00

Overpayment

4,096,885.00

Project Classification

Category B

Project Status

Complete and in use

Comments

The project was intended to improve pedestrian transport and to reduce traffic/human conflict along the two main roads which have high pedestrian flow.

However, there are omissions e.g.. zebra crossings, guard rails, gully/drain crossings and its

distance is not defined. The facility would have catered fully for pedestrians on both sides of the road rather than the facility criss crossing the main road at Temple road. The project did not also cater for the disabled. There is also need to repair stone pitching to avoid eroding the NMT facility.

The county Government clarified that the amount awarded was 48,744,467.55 against the engineers' estimate of 38,638,342 . Additional, the county paid the contractor 41,947,797 according to the measured works that the contractor had done on the ground. The county Government also affirmed that they are in discussions with KeNHA to set up a zebra crossing where the NMT is crossing the highway.

Project Name: Wamagana-Gachatha-Kahuro-Kiandu road

Sub County: Tetu

Ward: Wamagana

Project Activity: Grading and graveling

INITIAL ASSESSMENT



Assessment date

11th September 2015

Total funds awarded

7,809,068.00

Total funds spent

7,809,068.00

Outstanding Balance

0.00

Project Classification

Category B

Project Status

Complete and in use

Comments

The project was meant to improve communication and transportation along the loop. Although access by vehicle is now possible, the road should have had drains improved and access to homestead facilitated through instal-

lation of appropriate culverts of which that did not happen.

Currently, the beneficiaries are backfilling part of the drains to make their compounds accessible. The project did not cover the whole distance as documented. It only covered 50% of the total distance.

This means that the project was done at approximately double the unit cost and therefore there is no commensurate value for taxpayers' money.

Project Name: Wamagana-Gachatha-Kahuro-Ki- andu road

Sub County: Tetu

Ward: Wamagana

Project Activity: Grading and graveling

FOLLOW UP ASSESSMENT



Assessment date

8th November 2016

Total funds awarded

7,809,068.00

Total funds spent

7,809,068.00

Outstanding Balance

0.00

Project Classification

Category B

Project Status

Complete and in use

Comments

The project was meant to improve communication and transportation along the loop.

The road should have been graded to its width to allow walk paths, drainage channels and access to homes. The scope of work should also have been followed.



Project Name: Gatuyaini ECDE

Sub County: Othaya

Ward: Iria-ini

Project Activity: Refurbishment of Gatuyaini ECDE.

INITIAL ASSESSMENT



Assessment date

15th September 2015

Total funds awarded

1,896,750.00

Total funds spent

1,896,750.00

Outstanding Balance

Nil

Project Classification

Category B

Project Status

Complete and in use

Comments

The objective of the project was to provide a conducive environment for the young children to learn in, however, the workmanship was not up to the required standard despite the materials supplied

(Apart from the timber for the verandah support beam) being of reasonable quality.

The floor screed is cracked implying there was no proper water curing, black boards are plastered instead of wooden and they were heavily cracked.

The painting on the black boards is of poor quality, additionally, internal painting which is emulsion paint should be overlaid with gloss paint to a height of 1.2 M. The floor skirting should have been cast with the floor screed.

Project Name: Gatuyaini ECDE

Sub County: Othaya

Ward: Iria-ini

Project Activity: Refurbishment of Gatuyaini ECDE.

FOLLOW UP ASSESSMENT



Assessment date
9th November 2016

Total funds awarded
1,896,750.00

Total funds spent
1,896,750.00

Outstanding Balance
Nil

Project Classification
Category B

Project Status
Complete and in use

Comments

The workmanship on the floor screeding was poor and the timber joinery at the verandah was done poorly. The paint work was also not done to standard.

Although the new roofing sheets were to roof the whole ECDE class, it was evident that the roof work was carried out partially (About 30%) and the old ones were placed. The rest new sheets were used in the primary school instead of the ECDE.

The contractor had not been paid the retention money by the county government at the day of assessment. There is need for supervision from the relevant department during construction.

Project Name: Gikurwe-Gathanji road

Sub County: Othaya

Ward: Iria-ini

Project Activity: Grading and graveling of the road

INITIAL ASSESSMENT



Assessment date

18th September 2015

Total funds awarded

8,209,900.00

Total funds spent

8,209,900.00

Outstanding Balance

00

Project Classification

Category B

Project Status

Incomplete and in use

Comments

The projects objective was to improve access to areas served by the link roads in order to enhance socio-economic benefit to the beneficiaries / residents through creation of all weather roads.

patching that was poorly done, i.e. no compaction , and therefore durability and user comfort are greatly compromised. There are no drainage structures which will lead to rapid deterioration.

No signboards to guide the public access to information on the scope of works that was erected.

There is no road furniture installed and hence there is no value for money.

The only activity carried out is spot

Project Name: Gikurwe-Gathanji road

Sub County: Othaya

Ward: Iria-ini

Project Activity: Grading and graveling of the road

FOLLOW UP ASSESSMENT



Assessment date
9th November 2016

Total funds awarded
8,209,900.00

Total funds spent
8,209,900.00

Outstanding Balance
Nil

Project Classification
Category B

Project Status
Abandoned/incomplete and in use

Comments

The project objective was to improve access to the areas served

by the link roads in order to enhance social economic benefit to the beneficiaries/residents through construction of an all weather road.

Murraming was done on Gakurwe- Kabebero tarmac road but there is no murraming from Kabebero-Gathanji road. Some of the drainage works was done by the community. This indicates that there is no value for money mainly for the Gathanji area community.

The erected sign board does not indicate adequate information on the contractor, amount allocated, scope of work and the contract number.

Project Name: Kimahuri Secondary school

Sub County: Kieni East

Ward: Kabaru

Project Activity: Construction of a classroom block.

INITIAL ASSESSMENT



Assessment date
22th September 2015

Total funds awarded
1,195,000.00

Total funds spent
1,195,000.00

Outstanding Balance
Nil

Project Classification
Category B

Project Status
Complete and in use

Comments

The classroom is being used as a makeshift laboratory for both physics and chemistry. It involved construction of a modern classroom block to create a conducive learning environment for the students.

However, the implementation standards / quality were low eroding the value of money.

For instance, the roofing sheets used are gauge 32 instead of 28 and the building doesn't have a ceiling. The sand quality is also doubtful as floor screed and plaster is already cracked hence poor workmanship

Project Name: Kimahuri Secondary school

Sub County: Kieni East

Ward: Kabaru

Project Activity: Construction of a classroom block.

FOLLOW UP ASSESSMENT



Assessment date

4th November 2016

Total funds awarded

1,195,000.00

Total funds spent

1,195,000.00

Outstanding Balance

Nil

Project Classification

Category B

Project Status

Complete and in use (used as a laboratory)

Comments

The classroom has been permanently been converted into a laboratory since permanent work tops have been fixed.

The repairs recommended are not yet undertaken. For instance, the sand quality is doubtful as floor screed and plaster is already cracked hence poor workmanship. All this requires to be redone.

Floor screeding requires to be done. Also, being a laboratory, it requires more ventilations, emergency doors and fire extinguishers.



Project Name: Munyu-Jet Junction Villa Road

Sub County: Kieni East

Ward: Kabaru

Project Activity: Grading and graveling.

INITIAL ASSESSMENT



Assessment date
22th September 2015

Total funds awarded
8,028,260.00

Total funds spent
8,028,260.00

Outstanding Balance
Nil

Project Classification
Category B

Project Status
Complete and in use

Comments

The project entailed improvement of access to the area by creating all weather roads in order to enhance socio-economic benefit to the beneficiaries/residents.

The project was poorly implemented thus compromising durability and user friendliness. Some dilapidated sections occasioned by inadequate drainage already being done by NYS.

There was no sign board that was erected to give public access to information on the road.

Project Name: Munyu-Jet Junction Villa Road

Sub County: Kieni East

Ward: Kabaru

Project Activity: Grading and graveling.

FOLLOW UP ASSESSMENT



Assessment date
10th November 2016

Project Status
Complete and in use

Total funds awarded
8,028,260.00

Total funds spent
8,028,260.00

Outstanding Balance
Nil

Project Classification
Category B

Comments

At the time of reassessment, the road looked like some grading had taken place therefore eroding the murrum. The project was therefore poorly implemented and supervised. There was also no adequate information on the project contractor, amount allocated and the scope of work.



Project Name: Kwa Muria Ngarango-Hiriga Gitathi area

Sub County: Mathira

Ward: Ruguru

Project Activity: Grading and graveling of various link roads

INITIAL ASSESSMENT



Assessment date
17th September 2015
Total funds awarded
7,547,192.00
Total funds spent
4,812,724.00
Outstanding Balance
2,734,468.00
Project Classification
Category B
Project Status
Complete and in use

Comments

The projects objective was to improve access to areas served by the loop and link roads in order to enhance socio-economic benefit to the beneficiaries through creation of all weather road conditions.

The initial contract was for kshs. 5,295,574. Additional works of kshs. 2,251,618 were added bringing the contract figure to kshs. 7,547,192. This was later increased to kshs. 11,511,207.80 under unclear circumstances.

Standards of workmanship are poor and it is difficult to ascertain exactly what work was done on the ground as documentation is not very clear and the work was carried out in bits and pieces. The gravelled sections totalled to 3.75 km, implying that the total cost should be in the region of kshs. 5.0 m (Assuming a normal rate of kshs. 1.35 km for grading/ graveling).

Project Name: Kwa Muria Ngarango-Hiriga Gitathi area

Sub County: Mathira

Ward: Ruguru

Project Activity: Grading and graveling of various link roads

FOLLOW UP ASSESSMENT



Assessment date

8th November 2016

Total funds awarded

11,511,207.80

Total funds spent

11,511,207.80

Outstanding Balance

Nil

Project Classification

Category B

Project Status

Complete and in use

Comments

The project's objective was to im-

prove access to areas served by the loop and link roads in order to enhance social-economic benefit to the beneficiaries through creation of an all weather road condition.

The amount allocated initially and the funds that were later added to get a total of 11,511.207.80, would have done much better and cover a longer distance by murraming. The scope of work is not well defined in the additional funds and the value for money not observed.



Project Name: Karson Photo House

Sub County: Nyeri Central

Ward: Rware

Project Activity: Refurbishment of office block

INITIAL ASSESSMENT and FOLLOW UP ASSESSMENT



Assessment date
9st September 2015

Total funds awarded
28,734,352.00

Total funds spent
28,734,352.00

Outstanding Balance
Nil

Project Classification
Category B

Project Status
Complete and in use

Comments

The objective of the project was to provide ample office space for certain departments within the county Government, however these refurbishment was done on a privately owned building that the county might vacate after their term in office lapses at a cost

that would have been enough to erect a two storey office building. Though the quality of the materials and workmanship is good, the money spent in this project does NOT represent commensurate value for Taxpayers' money.

The project Components were; Builders works 14,098,860 Telecoms works - 6,157,370, Electrical installations works-6,583,552, Plumbing and drainage works - 1,894,570.

The amount made public in the quarterly implementation report is only that of Plumbing and drainage works.



Project Name: Wambugu ATC Hostel

Sub County: Nyeri Central

Ward: Gatitu

Project Activity: Construction of new hostel block: includes plumbing and sanitation works.

INITIAL ASSESSMENT



Assessment date

11th September 2015

Total funds awarded

17,735,204.80

Total funds spent

1,000,000.00

Outstanding Balance

16,735,204.00

Project Classification

Category C

Project Status

Ongoing and not in use

Comments

The project is meant to provide increased accommodation room for the school. The project is on-going implemented up to sub-structure level, only the substructure partition without the floor slab. The pace of implementation is very slow, payments will have to be made from the 2015/16 FY meaning it will impact negatively on the already planned projects



Project Name: Wambugu ATC Hostel

Sub County: Nyeri central

Ward: Gatitu

Project Activity: Construction of new hostel block: includes plumbing and sanitation works.

FOLLOW UP ASSESSMENT



Assessment date
9th November 2016

Total funds awarded
17,735,204.80

Total funds spent
5,000,000.00

Outstanding Balance
12,735,204.80

Project Classification
Category C

Project Status
Ongoing and not in use

Comments

This project is meant to increase trainees' accommodation at the Wambugu Farmers Training Centre.

The project implementation is being carried out in a fast pace. The supervision is also carried out well as per specifications such as expansion joints observed, joining of timber with metal straps observed as well. The main works remaining are mostly internal e.g. plastering, windows, doors, plumbing and floor screeding. Good implementation of the project observed.

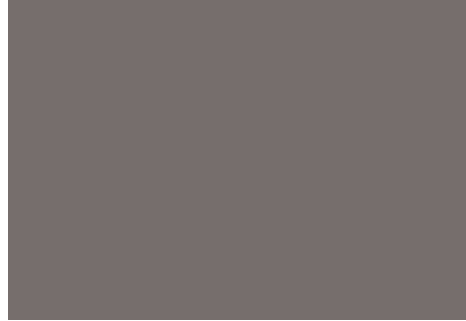
Project Name: Wangi Kanuna Irrigation

Sub County: Nyeri Central

Ward: Kiganjo

Project Activity: supply of pipes and fittings for irrigation project.

INITIAL ASSESSMENT



Assessment date

10th September 2015

Total funds awarded

9,000,000.00

Total funds spent

9,000,000.00

Outstanding Balance

00

Project Classification

Category G

Project Status

Ongoing and not in use

Comments

This project was to be implemented in full partnership with community members; the County Government was to procure and deliver the materials while the community was to dig the trenches and do the actual laying and joining of the pipes, the pipes have been procured but due to issues of way-leave/ Easement from one land owner, the project has not been fully implemented and the pipes are in storage. The intake is in place and was funded by other sources previous.

Project Name: Wangi Kanuna Irrigation

Sub County: Nyeri Central

Ward: Kiganjo

Project Activity: supply of pipes and fittings for irrigation project.

FOLLOW UP ASSESSMENT



Assessment date

7th November 2016

Total funds awarded

9,000,000.00

Total funds spent

8,700,000.00

Outstanding Balance

300,000.00

Project Classification

Category C

Project Status

Ongoing and not in use

Comments

The project objective was to ensure food security and enhance

income for the beneficiaries.

The materials (Pipes and Fittings) were supplied partially on time. There is more effort by the beneficiaries to be put considering membership is 700, and the labour attendance is approximately 35 persons, therefore slow implementation and possible weather damage of pipes. The total piles laid by reassessment date is 440m and total mainline is 11kms. The way leave issue that had stalled the implementation was resolved.



Project Name: Nyamari Primary School

Sub County: Othaya

Ward: Iria-ini

Project Activity: No project activity provided

INITIAL ASSESSMENT



Assessment date

18th September 2015

Total funds awarded

670,050.00

Total funds spent

00

Outstanding Balance

670,050.00

Project Classification

Category E

Project Status

Does not exist.

Comments

The project does not exist. No material have been delivered to the ECDE centre nor has any re-furbishment been done.

Project Name: Nyamari Primary School

Sub County: Othaya

Ward: Iria-ini

Project Activity: No project activity provided

FOLLOW UP ASSESSMENT



Assessment date

9th November 2016

Total funds awarded

670,050.00

Total funds spent

00

Outstanding Balance

670,050.00

Project Classification

Category E

Project Status

Does not exist.

Comments

The project does not exist and the community around seemed not to be informed of the project. The pupils who were there before had been transferred to Gitundu primary school in May 2016.

The county government clarified this amount was not budgeted for and not spent, this is despite the project being classified as complete in the county monitoring and evaluation report. See annex.



Project Name: Sagana Foot Bridge

Sub County: Kieni/Mathira

Ward:

Project Activity: Reconstruction of foot bridge at Sagana river.

INITIAL ASSESSMENT



Assessment date
30th September 2015

Project Classification
Category E

Total funds awarded
951,200.00

Project Status
Does not exist

Total funds spent
00

Comments
The project is non-existent and there is no information on the project in the relevant offices and on the ground.

Outstanding Balance
951,200.00



Project Name: Sagana Foot Bridge

Sub County: Kieni/Mathira

Ward:

Project Activity: Reconstruction of foot bridge at Sagana river.

FOLLOW UP ASSESSMENT



Assessment date

8th November 2016

Total funds awarded

951,200.00

Total funds spent

00

Outstanding Balance

951,200.00

Project Classification

Category E

Project Status

Does not exist.

Comments

The project is non existent and there is no information from the county Government whether the funds were reallocated.

The county government clarified this amount was not budgeted for and not spent, this is despite the project being classified as complete in the county monitoring and evaluation report. See annex.

Additionally, the information from the infrastructure department indicated that there is need of a motorable bridge to be funded instead of the footbridge which will not benefit the community around in a comprehensive manner i.e. Vehicles and motorbikes should be able to pass through.

Project Name: Nanyuki CCM Primary School

Sub County: Kieni East

Ward: Gakawa

Project Activity: Construction of twin ECDE classroom block

INITIAL ASSESSMENT



Assessment date

15th September 2015

Total funds awarded

1,983,820.00

Total funds spent

1,983,820.00

Outstanding Balance

Nil

Project Classification

Category G

Project Status

Ongoing and not in use

Comments

The construction work had two contracts i.e. Supply of building material at Kshs 1,983,820 and supply of labour at Kshs 497,989. For the materials they are of passable quality but not the highest quality in the market however they were delivered in good time but the labour contract has delayed construction. In total the estimated cost of the project is OK and represents value for money.



Project Name: Nanyuki CCM Primary School

Sub County: Kieni East

Ward: Gakawa

Project Activity: Construction of twin ECDE classroom block

FOLLOW UP ASSESSMENT



Assessment date

10th November 2016

Total funds awarded

2,481,807.00

Total funds spent

1,983,820.00

Outstanding Balance

497,987.00

Project Classification

Category G

Project Status

Ongoing and not in use

who are young children.

The materials were delivered on time but the quality of cement stored is now of doubtful quality. Education department has formed a technical committee to implement the project and are sourcing more funds to cater the change in design of foundation works. There is need of kshs. 497,989 for the labour cost.

Comments

The objective of the project was to create a conducive learning environment for the beneficiaries

The current works carried out are poorly done. Involvement of supervision of relevant department critical.



Challenges

- 1. Access to information.** Accessing information (contractor details, contracts, project budgets, scope of works and work programmes) was difficult considering that, in most cases; the project authorities at the project site, funded by the county did not have any information about project implementation. In addition, some project documents provided by the counties provided vague information especially on financial information and project status and location.
- 2. Value for money.** The pace of implementation of most county projects is too slow while others were badly implemented as assessed by the NTA technical persons in Nyeri county. Additionally, some projects cost were grossly over estimated and therefore don't represent value for money.
- 3. Traceability** of projects in the department of transport, public works and infrastructure was a major challenge because of lack of clear names and locations of these projects.
- 4.** Lack of citizen involvement in project implementation cycle.

Recommendations

- 1.** Enhance Access to information. Nyeri county government should make public documents available to interested persons including NTA. It should also lessen the bureaucracy involved in accessing such documents. Additionally, this information should be availed at the lowest level possible, for example, the ward administrator's offices.
- 2.** Ensure Value for money. The county governments should improve the badly implemented projects, which clearly depict the aspect of value for money in service delivery. Nyeri County needs to adopt the model of project management committees to enhance citizen participation and civilian oversight. This will make it

easy to track project proposals, disbursements and expenditure. Additionally enhance the Monitoring and Evaluation capacity of county government. This can be done through a capacity building program that enables counties to adequately monitor projects and properly store all relevant project documents.

3. The county Government should map out the roads in the county and clearly name and provide the correct locations of these projects.
4. Both the national and county government should adopt the social accountability mechanism and fix rate strategy to minimize public resource wastage.
5. Counties should adequately communicate to the members of the public on multiple year funded projects with projected time lines, -reallocated resources and those that are facing challenges in one way or another leading to the delay in project implementation.

Lessons learnt

Willingness of the county to collaborate and act on issues identified for action by partners like NTA.

CONCLUSION

This pilot assessment of county expenditures on infrastructure projects reveals significant successes as well as challenges in the management of public resources. NTA hopes that moving forward counties will adopt the recommendations to improve on project implementation for better outcomes towards better livelihoods for Kenyans.

Annex : Correspondence with county government officials

REPUBLIC OF KENYA



COUNTY GOVERNMENT OF NYERI

DEPARTMENT OF FINANCE AND ECONOMIC PLANNING

MONITORING AND EVALUATION REPORT

F/Y 2013/2014

JULY, 2014

PROJECT NAME	PROJECT LOCATION	PROJECT STATUS (ongoing or new)	ESTIMATED COST OF PROJECT PROVIDED IN FY 2013/2014 BUDGET	FINANCING		TIMELINE	
				Kshs	Kshs	Start Date	Expected Completion Date
				GOK			
meeting point							
Hire equipment and lowbed of GKA949L	Nyeri County Headquarters	Complete	836,500	836,500	Jan2014	June 2014	836,500
Hire of equipments GKA295 flat bed tipper, GKz 4*4 utility SW loaded and GKA104M	Nyeri County Headquarters	Complete	163,580	163,580	Jan2014	June 2014	163,580
Thiriku foot bridge	Gachatha coffee factory	Complete	310,000	310,000	Jan2014	June 2014	310,000
Reconstruction of footbridge	River sagana	Complete	951,200	951,200	Jan2014	June 2014	951,200
Construction of bridge	Linking mukurweini west and muranga	Complete	684,000	684,000	Jan2014	June 2014	684,000
Gatero Roads	Endarasha ward	Complete	437,500	437,500	Jan2014	June 2014	437,500
Kangemi Road	Rware ward	Complete	342,000	342,000	Jan2014	June 2014	342,000
Grading of kamakwa roads	Kamakwa	Complete	123,750	123,750	Jan2014	June 2014	123,750
Grading of roads	Rware, Mweiga and Mugunda	Complete	840,000	840,000	Jan2014	June 2014	840,000
Grading of roads	Muruguru Kamakwa and Muthuaini Roads	Complete	321,750	321,750	Jan2014	June 2014	321,750
Murram spot improvement	Gathumbi Tea buying center gikura road	Complete	1,034,720	1,034,720	Jan2014	June 2014	1,034,720
Murram and spot improvement	Chania, Kirurumi Road at Ihwa	Complete	937,280	937,280	Jan2014	June 2014	937,280
Murram and spot improvement	Njoguini-Kinaini Road	Complete	271,820	271,820	Jan2014	June 2014	271,820
Grading of roads	Mukurweini central	Complete	64,800	64,800	Jan2014	June 2014	64,800
Grading of roads	Gakawa, Thegu river, Ruring'u wards	Complete	731,500	731,500	Jan2014	June 2014	731,500
Improvement and Gravelling of roads	Silent lodge area road in Othaya sub-	Complete	420,000	420,000	Jan2014	June 2014	420,000 160,000

PROJECT NAME	PROJECT LOCATION	PROJECT STATUS (ongoing or new)	ESTIMATED COST OF PROJECT PROVIDED IN FY 2013/2014 BUDGET	FINANCING	TIMELINE		
					Start Date	Expected Completion Date	Actual Expenditure As at 30 th June, 2014
			Kshs	Kshs			Kshs
				GOK			
timber, building materials							
Supply of hardware items	Thangathi primary school	Complete	726,060	726,060	Jan2014	June2014	726,060
Kimahuri secondary school,	Kabaru Ward	Complete	1,195,000	1,195,000	Jan, 2014	June, 2014	1,195,000
Construction of toilet blocks	Nyaribo Secondary school	complete	1,344,119	1,344,119	Jan2014	June2014	1,344,119
Supply of computers	Karatina ward	Complete	563,600	563,600	Jan2014	June 2014	563,600
Nyamari Pry School	Nyamari - Othaya	Complete	670,050	670,050	Jan2014	June 2014	670,050
							5,225,359
Water , sanitation environment and natural resources							
Scooping of Karatina dumpsite by truck shovel	Karatina	complete	1,330,000	1,330,000	Jan2014	June 2014	1,330,000
Excavating and land filling of dumpsites	Nyeri Town	complete	980,000	980,000	Jan2014	June 2014	980,000
Supply of assorted water pipes and fitting for wakiundu water project	Mahiga ward	Complete	530,000	530,000	Jan2014	June 2014	530,000
Bulldozer services	Nyeri,Othaya and Karatina Dumpsites	Complete	1,356,000	1,356,000	Jan2014	June 2014	1,356,000
Seedlings supply	Tetu, Nyeri Town, Subcounty	complete	2,895,910	2,895,910	Jan2014	June 2014	2,895,910
Supply of Seedlings ficus juniperas and prunus Africana and madaggs carensis	Nyeri county	Complete	338,000	338,000	Jan2014	June 2014	338,000
Supply of seeds ficus natalensis and caseanda baliscombei	Nyeri county	Complete	741,120	741,120	Jan2014	June 2014	741,120
							8,171,030
Health Services							
Renovation of CEM for health	Nyeri Town	Complete	929,972	929,972	Jan2014	June 2014	929,972



HEAD OFFICE

National Taxpayers Association (NTA)

Diani Close, Off Ole Odume Road | Gate No. 7, House No. 5
P. O. Box 4037 - 00506, Nyayo Stadium, Nairobi, Kenya
Cell Phone: 254-701-946557 | 254-734-500940
Email: admin@nta.or.ke | Website: www.nta.or.ke

Nairobi Regional Office
Diani Close, Off Ole Odume
Road
Gate No. 7, House No. 5
P.O. Box 4037 - 00506 Nairobi
Cell Phone: 254-701-946556
Email: nairobi@nta.or.ke

Eastern Regional Office
Town Plaza, 3rd Floor, Ngei
Road
P.O. Box 2046 -90100 Machakos
Cell Phone: 254-701-946547
Email: eastern@nta.or.ke

Rift Valley Regional Office
Meadows Hse, 1st Floor, Room
106
Opposite Sirikwa Hotel
P.O. Box 4956-301 00 Eldoret
Cell Phone: 254-701-946543
Email: riftvalley@nta.or.ke

Western Regional Office
Kakamoni Plaza, 1st Floor
Above Post Bank,
Canon Awori Street
Cell Phone: 254-701-946551
Email: western@nta.or.ke

Central Regional Office
Nyeri Teachers Plaza, 1st Floor,
Room 10
P.O. Box 567 - 10100 Nyeri
Cell Phone: 254-701-946544
Email: central@nta.or.ke

Coast Regional Office
Kanderbhoy Building
Nkurumah Road, 1st Floor, Suite
14,
Opp Co-op Bank
P.O. Box 98860 Mombasa
Cell Phone: 254-701-946548
Email: coast@nta.or.ke

North Eastern Regional Office
Diani Close, Off Ole Odume
Road
Gate No. 7, House No. 5
P.O. Box 4037-00506 Nairobi
Cell Phone: 254-701-447448
Email: northeastern@nta.or.ke

Nyanza Regional Office
Nakumatt Mega City, Mezza-
nine Floor
Nairobi Road
P.O. Box 204-40123 Kisumu
Cell Phone: 254-701-946550
Email: nyanza@nta.or.ke



National Taxpayers Association
pesa zetu, haki yetu

Supported by:



**german
cooperation**

DEUTSCHE ZUSAMMENARBEIT

giz Deutsche Gesellschaft
für Internationale
Zusammenarbeit (GIZ) GmbH



**MINISTRY FOR FOREIGN
AFFAIRS OF FINLAND**